

CLAWSON EARLY CHILDHOOD CENTER

(248) 655-3838

313 REDRUTH AVENUE

CLAWSON, MI 48017

WWW.CLAWSONSCHOOLS.ORG

August 18th, 2025

Dear Clawson Preschool families,

Welcome to the 2025-26 school year, we are beyond excited to have you in our program. We are thrilled to share that we moved to our new location this summer and we are now located at 313 Redruth, Clawson MI 48017.

The first day of school for the 2025-26 school year is Monday, September 8th for those that attend school on Monday. Tuesday, September 9th for our families that chose the Tuesday/Thursday option.

On Wednesday, September 3rd at 6:30pm we will be hosting our Community Open House, please feel free to join the community in visiting our new building and seeing all that we have completed.

Thursday, September 4th at 6:30pm we will have our parent informational meeting, this is for parents and guardians only as there is no childcare available. We will start our meeting in the gym and then divide into each classroom. Please park in the main parking lot off of Redruth.

On Monday and Tuesday of the first week of school you are welcome to walk your child into the building and stay for a few minutes in their classroom to settle them in. Starting on Wednesday, September 10th pick up and drop off will begin at your child's classroom assigned door. Your child's teacher will collect your child from the door at the class start time and bring them to you at the end of class.

A map will be provided to you so you can see where your child's classroom door is located.

If any of your contact information has changed since registering for preschool please contact Heather Kotz (Heather.Kotz@clawsonschools.org) with your new details. Please note that our communication is done by email throughout the year.

Please don't hesitate to contact me if you have any questions or concerns.

Claire Prost

Clawson Preschool Coordinator

Claire.prost@clawsonschools.org 248-655-3836

Clawson Preschool - 2025-2026 First Semester Calendar

School Hours:			Parent - Tot: 9:30am - 11:30am	3 Year Old: 9:30am - 11:30am or 12:30pm - 2:30pm
			4 Year Old: 8:30am - 11:30am or 12:30pm - 3:30pm	GSRP: 8:30am - 3:30pm 1/2 day 12:30pm-3:30pm
September		Day		
3rd		Weds	Community Open House 6:30pm-8pm.	
4th		Thurs	Parent Night for Tuition Programs 6:15pm-7:30pm	
5th		Fri	Meet and greet at ECC from 10am-12pm. Please see Meet and Greet Schedule.	
8th		Mon	First day of preschool.	
22nd		Mon	First semester preschool tuition or monthly or quarterly payment due	
24th		Weds	September PTO meeting 6:30pm ~ In Person at ECC.	
30th		Tues	September \$20 late fee incurs	
October		Day		
6th		Mon	Picture day (Retake day will be Tuesday, December 2nd.)	
6th-9th		Mon-Th	Scholastic Book fair - Hours to be determined- Book fair will be held outside.	
8th		Wed	Open House in the evening- more information to follow.	
10th		Fri	PTO sponsored Trunk OR Treat.	
15th		Wed	October monthly tuition payment due	
15th		Wed	October PTO meeting 6:30pm ~ In person	
23rd		Thurs	October \$20 late fee incurs	
November		Day		
4th		Tues	NO SCHOOL - Professional development for teachers	
12th		Weds	November PTO meeting 6:30pm ~ Held virtually this month via Google Meet.	
14th		Fri	Second half of first semester and November monthly payment due	
26th-28th		Wed-Fri	NO SCHOOL- Thanksgiving break	
24th		Mon	November \$20 late fee incurs	
December		Day		
15th		Mon	December monthly payment due	
22nd-Jan 2nd		Mon-Fri	NO SCHOOL- Winter break	
23rd		Tues	December \$20 late fee incurs	
January		Day		
5th		Mon	Preschool classes return	
14th		Wed	January PTO meeting 6:30pm ~ Held virtually via Google Meet.	
15th		Thurs	January monthly payment due	
16th		Fri	END of first semester	
19th		Mon	NO SCHOOL- Professional development for teachers	
23rd		Fri	January \$20 late fee incurs	
			Please note that when the district has a half day preschool is in session ALL day	



CLAWSON EARLY CHILDHOOD CENTER

(248) 655-3838

313 REDRUTH AVENUE

CLAWSON, MI 48017

WWW.CLAWSONSCHOOLS.ORG

August 18th, 2025

Dear Clawson Preschool families,

On Friday, September 5th we will be holding a teacher meet and greet.

This meet and greet will give you and your child an opportunity to meet their teacher and for you to see their classroom prior to school starting the week of Monday September 8th.

Our meet and greet will be held at the preschool and the schedule is as follows :

10am-11am Parent Tot with Mrs. Arnold.

10am-10:30am - Monday/Wednesday Three year old morning preschool with Ms. Streetman.

10:30am-11am - Tuesday/Thursday Three year old morning preschool with Ms. Streetman.

11am-11:30am - Monday/Wednesday Three year old afternoon preschool with Ms. Streetman.

10am-11am - Four year old morning preschool with Mrs. Mendelson.

Please note that you will need to be buzzed into the Early Childhood building and you will need to enter the front door off of Redruth.

Just a friendly reminder that if any of your contact information has changed since registering for preschool please contact Heather Kotz (Heather.Kotz@clawsonschools.org) with your new details.

Please note that our communication is done by email throughout the year.

It is also important that Heather be aware prior to the school year starting if you will be using PAYPAL to pay tuition for the 2025-2026 School year.

Please don't hesitate to contact me if you have any questions or concerns.

Claire Prost

Claire Prost

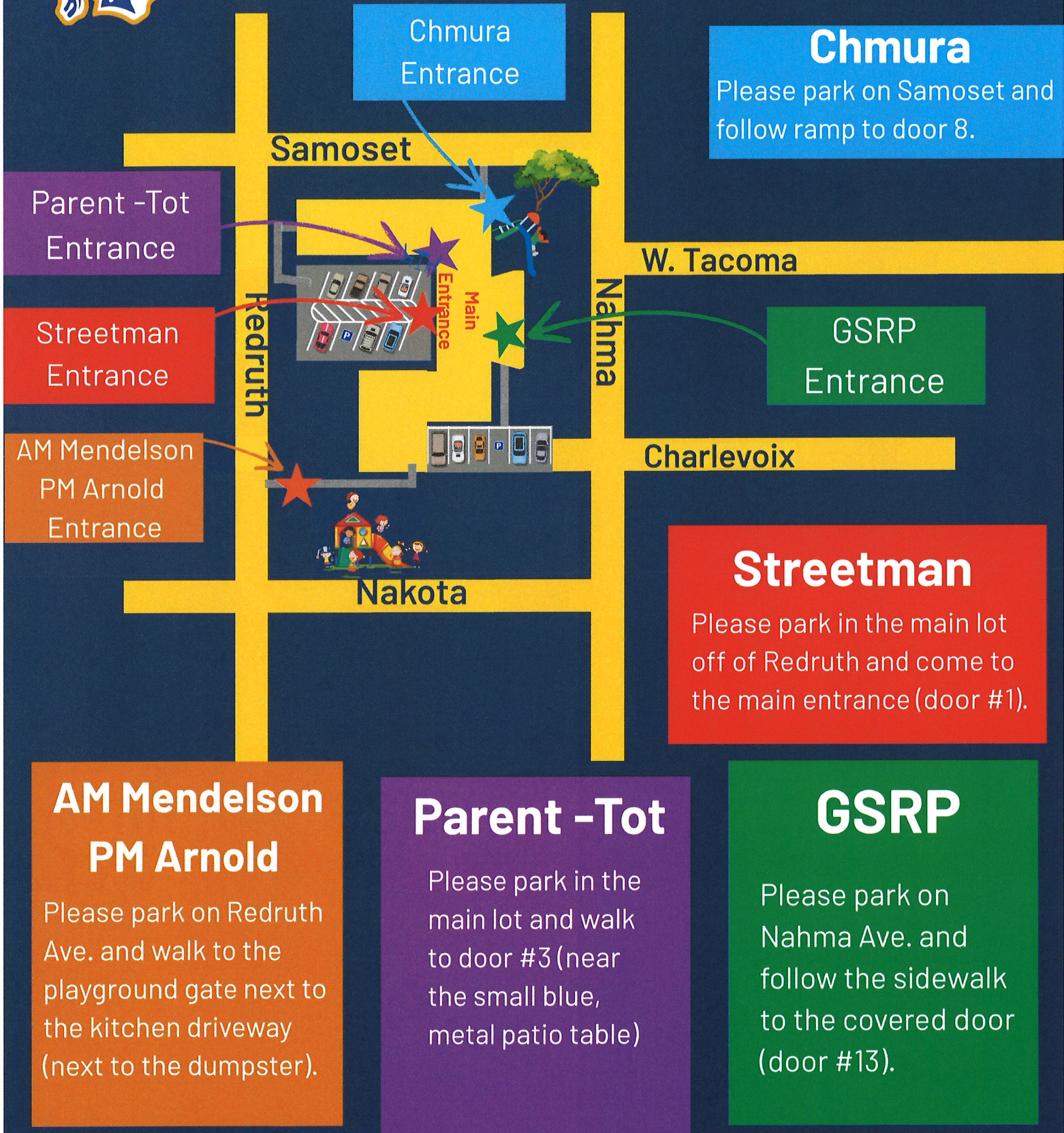
Clawson Preschool Coordinator ~ Claire.prost@clawsonschools.org

248-655-3836



CLAWSON

Early Childhood Center





CLAWSON EARLY CHILDHOOD CENTER

(248) 655-3838

313 REDRUTH AVENUE

CLAWSON, MI 48017

WWW.CLAWSONSCHOOLS.ORG

2025-26 FIRST SEMESTER PAYMENT DUE DATES:

MONDAY, SEPTEMBER 22ND – IN FULL FOR 1ST SEMESTER, MONTHLY OR QUARTERLY PAYMENT DUE

TUESDAY, SEPTEMBER 30TH - A \$20 LATE FEE WILL INCUR

WEDNESDAY, OCTOBER 15TH – MONTHLY PAYMENT DUE

THURSDAY, OCTOBER 23RD - A \$20 LATE FEE WILL INCUR

FRIDAY, NOVEMBER 14TH – MONTHLY/QUARTERLY PAYMENT DUE

MONDAY, NOVEMBER 24TH - A \$20 LATE FEE WILL INCUR

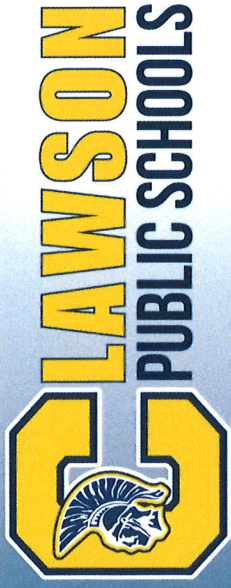
MONDAY, DECEMBER 15TH – MONTHLY PAYMENT DUE

TUESDAY, DECEMBER 23RD - A \$20 LATE FEE WILL INCUR

THURSDAY, JANUARY 15TH – MONTHLY PAYMENT DUE

FRIDAY, JANUARY 23RD - A \$20 LATE FEE WILL INCUR

Please don't hesitate to contact Claire Prost or Heather Kotz with any questions or concerns, 248-655-4402 and 248-655-4414.



CLAWSON PRESCHOOL

(248) 655-3838
313 REDRUTH AVENUE
CLAWSON, MI 48017

WWW.CLAWSONSCHOOLS.ORG

TUITION RATES FOR 2025-2026

CLASS	PER 17 WEEKS TUITION		MONTHLY		MONTHLY		QUARTERLY	
	In District	Out of District	In District	Out of District	In District	Out of District	In District	Out of District
PARENT/TOT	\$550	\$575	\$122.22	\$127.78	\$275	\$287.50		
\$30 Reg. Fee PARENT/Tot FRIDAY CLASS	\$275	\$287.50	\$61.11	\$63.89	\$137.50	\$143.75		
3 YR. OLD	\$685	\$710	\$152.22	\$157.78	\$342.50	\$355		
4 YR. OLD 2 DAYS	\$995	\$1020	\$221.11	\$226.67	\$497.50	\$510		
4 YR. OLD 4 DAYS	\$1750	\$1775	\$388.89	\$394.44	\$875	\$887.50		

*\$25 PER SEMESTER ADDITIONAL CHARGE FOR FAMILIES WHO LIVE OUT OF THE DISTRICT

*\$60 NON-REFUNDABLE ENROLLMENT FEE FOR 1 CHILD

*\$100 NON-REFUNDABLE ENROLLMENT FEE FOR MORE THAN 1 CHILD